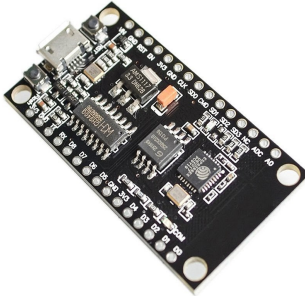




NodeMcu V3 LUA WeMos Compatible 32MB Flash CH340G WiFi Internet of Things Development Board



This WeMos-compatible NodeMCU IoT development board is based on the ESP8266 system chip from espressif, upgraded with 32M of flash memory. It is compatible with Lua-based ESP8266 NodeMCU boards. The additional memory this unit has allows for bigger projects with more complicated and large libraries.

It features a CH340G onboard USB-TTL Serial converter and a Micro-USB female connector. It comes with two sets of 15 pins headers to give you the freedom of choosing whether to use the connectors or to solder directly onto the pin holes for a more compact approach.

Specifications

- Capable of WIFI networking (IOT): Access-Point, station or Web Server etc.
- Uses simple LUA based programming language.
- Supports Arduino IDE
- Event-driven API for network applications
- 9 GPIO pins D0 - D8 featuring PWM functionality, I2C and SPI communication
- Input Operating Voltage: 5 - 9 VDC
- Dimensions: 49 x 26 x 4 mm (L x W x H) (without the headers)

Reference:

NodeMCU Firmware & Development Kit Website: <http://envistia.info/nodemcu>

ESP8266 Community Forum: <http://envistia.info/esp8266-forum>

How to program the ESP8266 using Arduino IDE tutorial videos:

<http://envistia.info/youtube-nodemcu-blink>

<http://envistia.info/youtube-nodemcu-gettingstarted>

Arduino Software (IDE) download link: <http://envistia.info/arduinoide>

The CH340G USB drivers may need to be installed on your computer before using this NodeMCU board with the Arduino IDE. CH340G USB Bus Converter driver download links:

<http://envistia.info/ch340win7drv>

<http://envistia.info/ch340win8drv>

<http://envistia.info/ch340serialdrv> (Serial Driver for Win10, Linux, Mac)